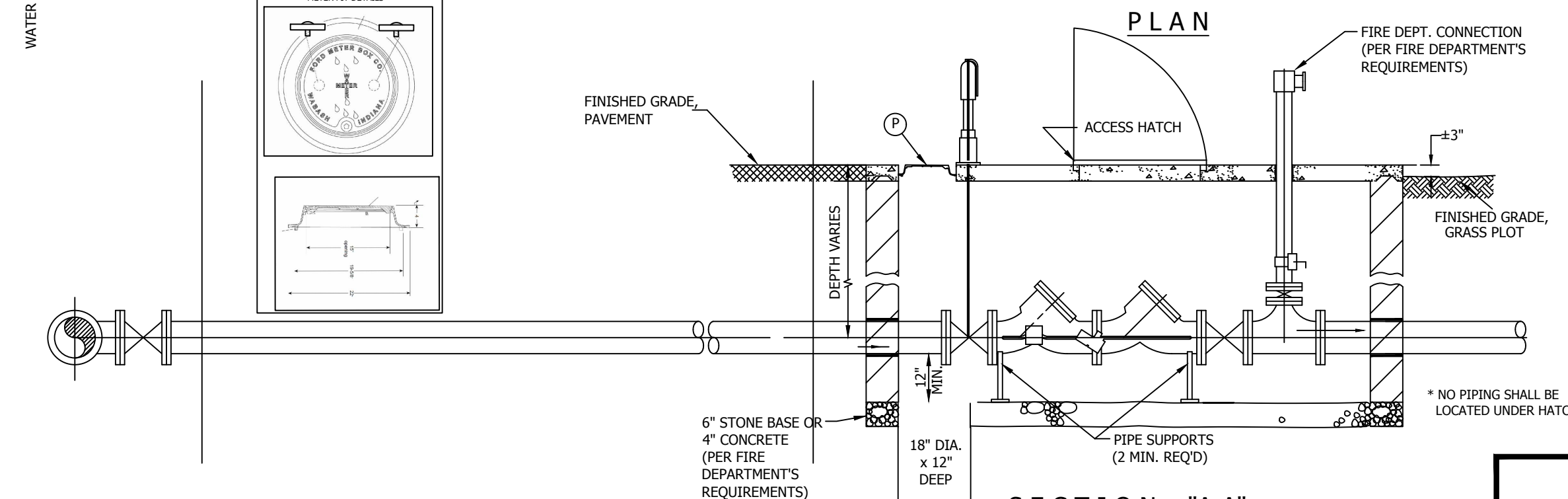


PLAN



SECTION "A-A"

NOTES:

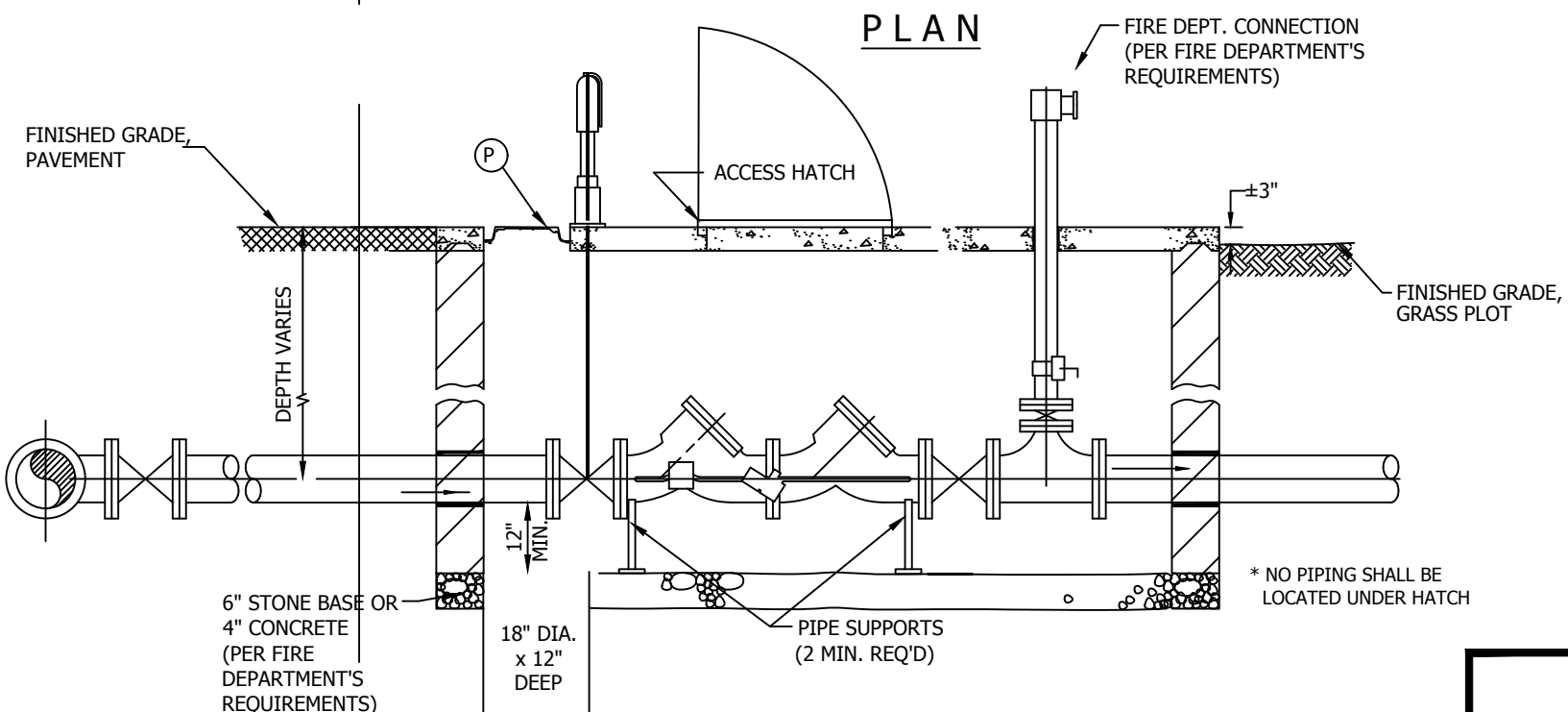
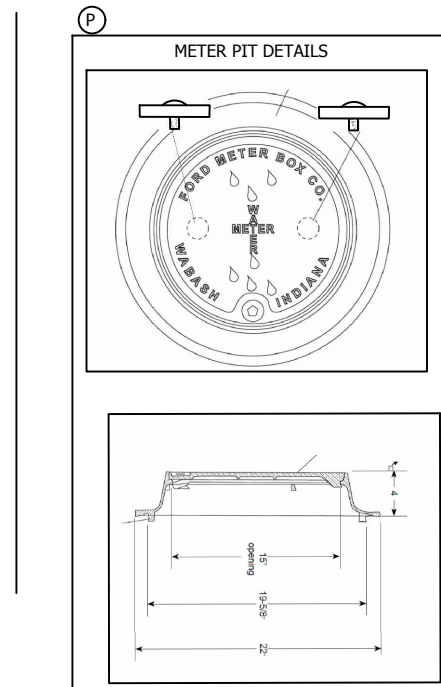
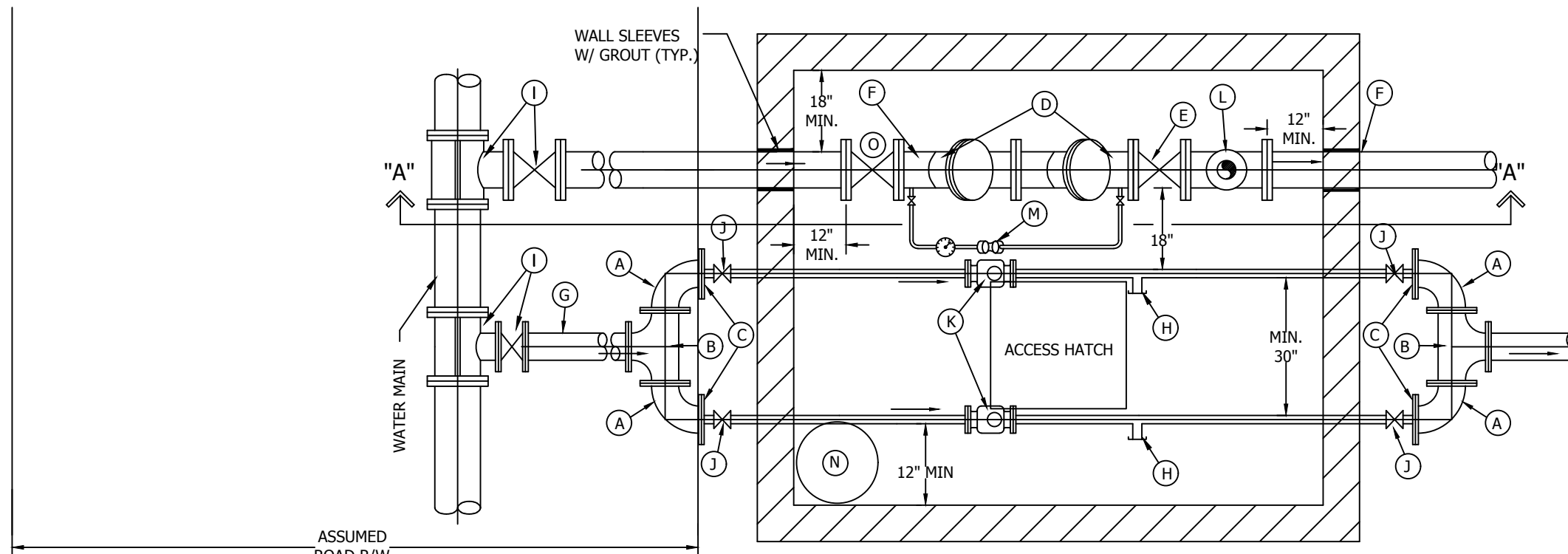
1. CUSTOMER SHALL FURNISH & INSTALL VAULT, INCLUDING ALL APPURTENCES EXCEPT AS NOTED BELOW.
2. VAULT CONSTRUCTION MATERIALS SHALL BE 8"x8"x16" CMU, OR PRECAST, OR CAST-IN-PLACE CONCRETE AT CUSTOMER'S SELECTION.
3. INSIDE DIMENSIONS PER DRAWING NOTES. VAULT TO BE SET LENGTHWISE WITH SERVICE.
4. TOP OF VAULT TO BE CONCRETE, AT LEAST 4" THICK WITH REINFORCING SUITABLE FOR ANTICIPATED LOADING. WHEN VAULT IS CONSTRUCTED IN PAVED AREAS, PAVEMENT IS TO BE LEVEL WITH TOP OF VAULT, AND THE TOP REINFORCED AS REQUIRED TO SUPPORT TRAFFIC LOADS (i.e. H-20 WHEEL LOADS). WHEN VAULT IS CONSTRUCTED IN GRASS PLOT, TOP OF VAULT SHALL BE 3" ABOVE FINISHED GRADE.
5. BOTTOM OF VAULT TO BE EITHER A MINIMUM OF 6" OF CRUSHED STONE OR 4" CONCRETE PER FIRE DEPARTMENT'S REQUIREMENT. MINIMUM CLEARANCE OF 12" BELOW BOTTOM OF FIRE SERVICE AND DOMESTIC SERVICE LINES IS REQUIRED.
6. DOUBLE CHECK DETECTOR ASSEMBLY SHALL BE A MODEL APPROVED BY THE INDIANA DEPARTMENT OF ENVIRONMENTAL MANAGEMENT, WITH FLANGED OS&Y GATE VALVE ON INLET & OUTLET SIDES. DETECTOR METER IS FURNISHED BY UTILITY AND INSTALLED BY CUSTOMER. STAINLESS STEEL BOLTS ARE REQUIRED.
7. ACCESS HATCH IN TOP OF VAULT SHALL BE 30"x30" ALUMINUM BILCO J-2AL, BILCO PCM-2, HALLIDAY W1S3030 OR EQUAL. ACCESS HATCH SHALL HAVE SAME OR GREATER LOADING CAPACITY AS VAULT LID. PIPE HATCH FRAME DRAIN TO VAULT FLOOR OR SUMP, AS APPLICABLE. IF THE LOCAL FIRE DEPARTMENT REQUIRES A SUMP PUMP IN THE VAULT, ELECTRICAL DISCONNECT IS REQUIRED ON TOP OF VAULT, INSTALLED ABOVE GRADE, PER LOCAL ELECTRICAL CODE.
8. A COMBINATION VAULT CAN BE USED ONLY IF METER IS LARGER THAN 2".
 - a. METERS TO BE LOCATED A MAXIMUM 18" FROM HINGE SIDE OF HATCH.
 - b. A 2" TEST PLUG SHALL BE INSTALLED AT LEAST 2 PIPE DIAMETERS DOWNSTREAM OF 3" OR LARGER METERS.
9. AS DIRECTED BY LOCAL OPERATIONS, ADDITIONAL PIPE SUPPORTS MAY BE REQUIRED.
10. THE LID AND RING THAT WILL BE REQUIRED IS FORD A53-TT OR FORD A53-T. THE A53-TT WILL BE USED FOR ALL VAULTS WITH THE DOMESTIC METER INSIDE. THE A53-T WITH BE USED FOR ALL VAULTS WITH THE DCDA ONLY LOCATED INSIDE THE VAULT.

LEGEND

- | | | | |
|------------------------------------|--|---|-------------------|
| (A) 90° RJDI BEND | (F) FIRE LINE | (K) DOMESTIC SERVICE METER (SEE NOTE 8) | (P) SUMP PUMP LID |
| (B) NOT USED | (G) DOMESTIC SERVICE (SEE NOTE 8) | (L) FLANGED TEE | |
| (C) RJDI REDUCING FLANGE | (H) 2" TEST PLUG | (M) DETECTOR METER (SEE NOTE 6) | |
| (D) DOUBLE CHECK DETECTOR ASSEMBLY | (I) TAPPING SLEEVE W/ TAPPING VALVE & BOX (COORDINATE W/ LOCAL UTILITY SUPERINTENDENT/MANAGER) | (N) SUMP PIT | |
| (E) FLANGED OS & Y VALVE | (J) RJDI GATE VALVE | (O) FLANGED OS&Y VALVE WITH PIT TYPE POST INDICATOR | |

INDIANA AMERICAN WATER

SCALE: NO SCALE		LONG SIDE VAULT DETAIL	
REVISIONS		STANDARD FOR COMBINED FIRE SERVICE & METER VAULT FOR DUAL METER CONFIGURATION	
DRAWN BY: R.K.B.	DATE: 2/2017	CHECKED: A.C.	1 of 1
AUTOCAD FILE: FS-M-V-DUAL-LONG SHORT SIDE.DWG	APPROVED:		

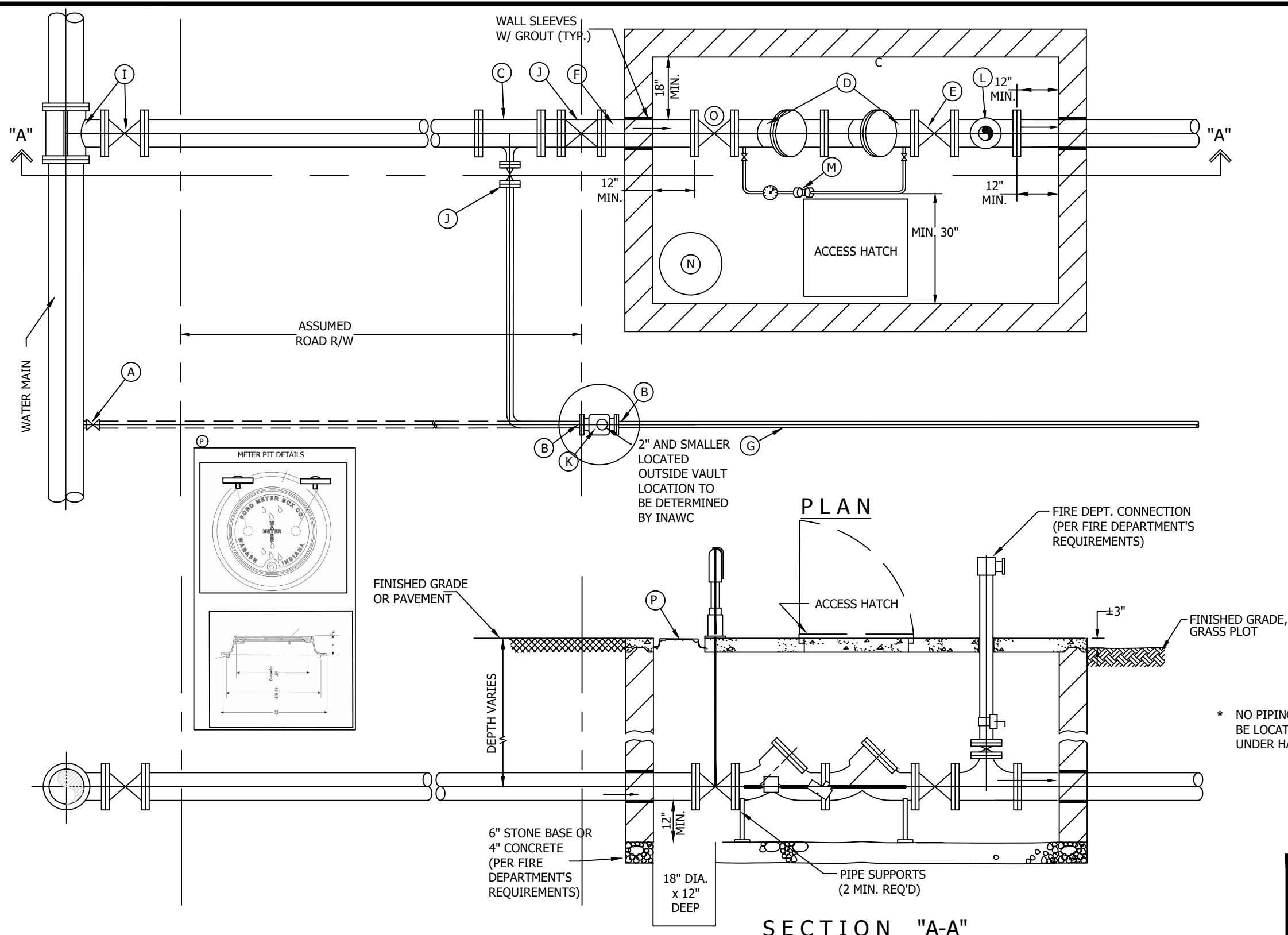


LEGEND

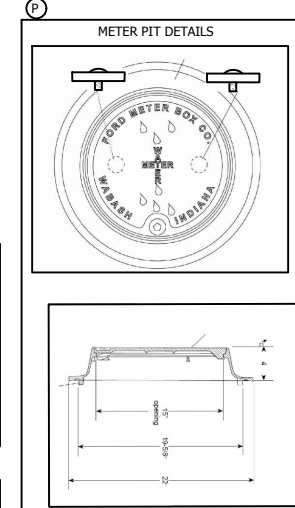
- (A) 90° RJDI BEND
- (B) RJDI TEE
- (C) RJDI REDUCING FLANGE
- (D) DOUBLE CHECK DETECTOR ASSEMBLY
- (E) FLANGED OS & Y VALVE
- (F) FIRE LINE
- (G) DOMESTIC SERVICE (SEE NOTE 8)
- (H) 2" TEST PLUG
- (I) TAPPING SLEEVE W/ TAPPING VALVE & BOX (COORDINATE W/ LOCAL UTILITY SUPERINTENDENT/MANAGER)
- (J) RJDI GATE VALVE
- (K) DOMESTIC SERVICE METER (SEE NOTE 8)
- (L) FLANGED TEE
- (M) DETECTOR METER (SEE NOTE 6)
- (N) SUMP PIT
- (O) FLANGED OS&Y VALVE WITH PIT TYPE POST INDICATOR
- (P) SUMP PUMP LID

- NOTES:**
- CUSTOMER SHALL FURNISH & INSTALL VAULT, INCLUDING ALL APPERTENCES EXCEPT AS NOTED BELOW.
 - VAULT CONSTRUCTION MATERIALS SHALL BE 8"x8"x16" CMU, OR PRECAST, OR CAST-IN-PLACE CONCRETE AT CUSTOMER'S SELECTION.
 - INSIDE DIMENSIONS PER DRAWING NOTES. VAULT TO BE SET LENGTHWISE WITH SERVICE.
 - TOP OF VAULT TO BE CONCRETE, AT LEAST 4" THICK WITH REINFORCING SUITABLE FOR ANTICIPATED LOADING. WHEN VAULT IS CONSTRUCTED IN PAVED AREAS, PAVEMENT IS TO BE LEVEL WITH TOP OF VAULT, AND THE TOP REINFORCED AS REQUIRED TO SUPPORT TRAFFIC LOADS (i.e. H-20 WHEEL LOADS). WHEN VAULT IS CONSTRUCTED IN GRASS PLOT, TOP OF VAULT SHALL BE 3" ABOVE FINISHED GRADE.
 - BOTTOM OF VAULT TO BE EITHER A MINIMUM OF 6" OF CRUSHED STONE OR 4" CONCRETE PER FIRE DEPARTMENT'S REQUIREMENT. MINIMUM CLEARANCE OF 12" BELOW BOTTOM OF FIRE SERVICE AND DOMESTIC SERVICE LINES IS REQUIRED.
 - DOUBLE CHECK DETECTOR ASSEMBLY SHALL BE A MODEL APPROVED BY THE INDIANA DEPARTMENT OF ENVIRONMENTAL MANAGEMENT, WITH FLANGED OS&Y GATE VALVE ON INLET & OUTLET SIDES. DETECTOR METER IS FURNISHED BY UTILITY AND INSTALLED BY CUSTOMER. STAINLESS STEEL BOLTS ARE REQUIRED.
 - ACCESS HATCH IN TOP OF VAULT SHALL BE 30"x30" ALUMINUM BILCO J-2AL, BILCO PCM-2, HALLIDAY W1S3030 OR EQUAL. ACCESS HATCH SHALL HAVE SAME OR GREATER LOADING CAPACITY AS VAULT LID. PIPE HATCH FRAME DRAIN TO VAULT FLOOR OR SUMP, AS APPLICABLE. IF THE LOCAL FIRE DEPARTMENT REQUIRES A SUMP PUMP IN THE VAULT, ELECTRICAL DISCONNECT IS REQUIRED ON TOP OF VAULT, INSTALLED ABOVE GRADE, PER LOCAL ELECTRICAL CODE.
 - A COMBINATION VAULT CAN BE USED ONLY IF METER IS LARGER THAN 2".
 - METERS TO BE LOCATED A MAXIMUM 18" FROM HINGE SIDE OF HATCH.
 - A 2" TEST PLUG SHALL BE INSTALLED AT LEAST 2 PIPE DIAMETERS DOWNSTREAM OF 3" OR LARGER METERS.
 - AS DIRECTED BY LOCAL OPERATIONS, ADDITIONAL PIPE SUPPORTS MAY BE REQUIRED.
 - THE LID AND RING THAT WILL BE REQUIRED IS FORD A53-TT OR FORD A53-T. THE A53-TT WILL BE USED FOR ALL VAULTS WITH THE DOMESTIC METER INSIDE. THE A53-T WITH BE USED FOR ALL VAULTS WITH THE DCDA ONLY LOCATED INSIDE THE VAULT.

SCALE: NO SCALE		SHORT SIDE VAULT DETAIL	
REVISIONS		STANDARD FOR COMBINED FIRE SERVICE & METER VAULT FOR DUAL METER CONFIGURATION	
DRAWN BY: R.K.B.	DATE: 2/2017	CHECKED: A.C.	1 of 1
AUTOCAD FILE: FS-M-Y-DUAL-LONG SHORT SIDING	APPROVED:		



- NOTES:**
- CUSTOMER SHALL FURNISH & INSTALL VAULT, INCLUDING ALL APPERTENCES EXCEPT AS NOTED BELOW.
 - VAULT CONSTRUCTION MATERIALS SHALL BE 8"x8"x16" CMU, OR PRECAST, OR CAST-IN-PLACE CONCRETE AT CUSTOMER'S SELECTION.
 - INSIDE DIMENSIONS PER DRAWING NOTES. VAULT TO BE SET LENGTHWISE WITH SERVICE.
 - TOP OF VAULT TO BE CONCRETE, AT LEAST 4" THICK WITH REINFORCING SUITABLE FOR ANTICIPATED LOADING. WHEN VAULT IS CONSTRUCTED IN PAVED AREAS, PAVEMENT IS TO BE LEVEL WITH TOP OF VAULT, AND THE TOP REINFORCED AS REQUIRED TO SUPPORT TRAFFIC LOADS (i.e. H-20 WHEEL LOADS). WHEN VAULT IS CONSTRUCTED IN GRASS PLOT, TOP OF VAULT SHALL BE 3" ABOVE FINISHED GRADE.
 - BOTTOM OF VAULT TO BE EITHER A MINIMUM OF 6" OF CRUSHED STONE OR 4" CONCRETE PER FIRE DEPARTMENT'S REQUIREMENT. MINIMUM CLEARANCE OF 12" BELOW BOTTOM OF FIRE SERVICE AND DOMESTIC SERVICE LINES IS REQUIRED.
 - DOUBLE CHECK DETECTOR ASSEMBLY SHALL BE A MODEL APPROVED BY THE INDIANA DEPARTMENT OF ENVIRONMENTAL MANAGEMENT, WITH FLANGED OS&Y GATE VALVE ON INLET & OUTLET SIDES. DETECTOR METER IS FURNISHED BY UTILITY AND INSTALLED BY CUSTOMER. STAINLESS STEEL BOLTS ARE REQUIRED.
 - ACCESS HATCH IN TOP OF VAULT SHALL BE 30"x30" ALUMINUM BILCO J-2AL, BILCO PCM-2, HALLIDAY W1S3030 OR EQUAL. ACCESS HATCH SHALL HAVE SAME OR GREATER LOADING CAPACITY AS VAULT LID. PIPE HATCH FRAME DRAIN TO VAULT FLOOR OR SUMP, AS APPLICABLE. IF THE LOCAL FIRE DEPARTMENT REQUIRES A SUMP PUMP IN THE VAULT, ELECTRICAL DISCONNECT IS REQUIRED ON TOP OF VAULT, INSTALLED ABOVE GRADE, PER LOCAL ELECTRICAL CODE.
 - A SEPARATE METER PIT/VAULT WILL BE USED FOR DOMESTIC METERS. DISTRICT TO PROVIDE PIT/VAULT DETAILS.
 - CUSTOMER SHALL FURNISH BALL VALVES ON BOTH SIDES OF THE DOMESTIC METER SETTING.
 - A 2" TEST PLUG SHALL BE INSTALLED AT LEAST 2 PIPE DIAMETERS DOWNSTREAM OF 2" OR LARGER METERS.
 - DETECTOR METER TO BE LOCATED A MAXIMUM 18" FROM HINGE SIDE OF HATCH.
 - AS DIRECTED BY LOCAL OPERATIONS, ADDITIONAL PIPE SUPPORTS MAY BE REQUIRED.
 - THE LID AND RING THAT WILL BE REQUIRED IS FORD A53-TT OR FORD A53-T. THE A53-TT WILL BE USED FOR ALL VAULTS WITH THE DOMESTIC METER INSIDE. THE A53-T WITH BE USED FOR ALL VAULTS WITH THE DCDA ONLY LOCATED INSIDE THE VAULT.

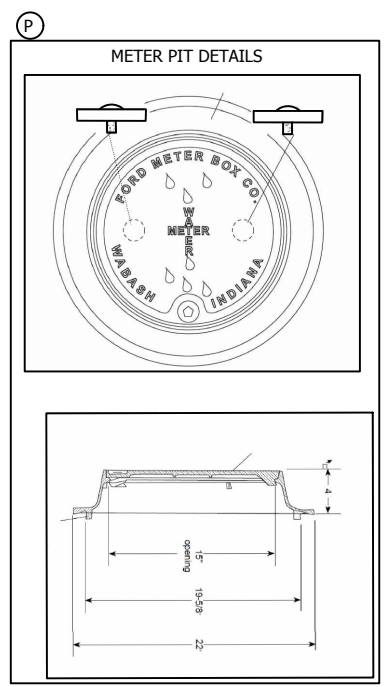
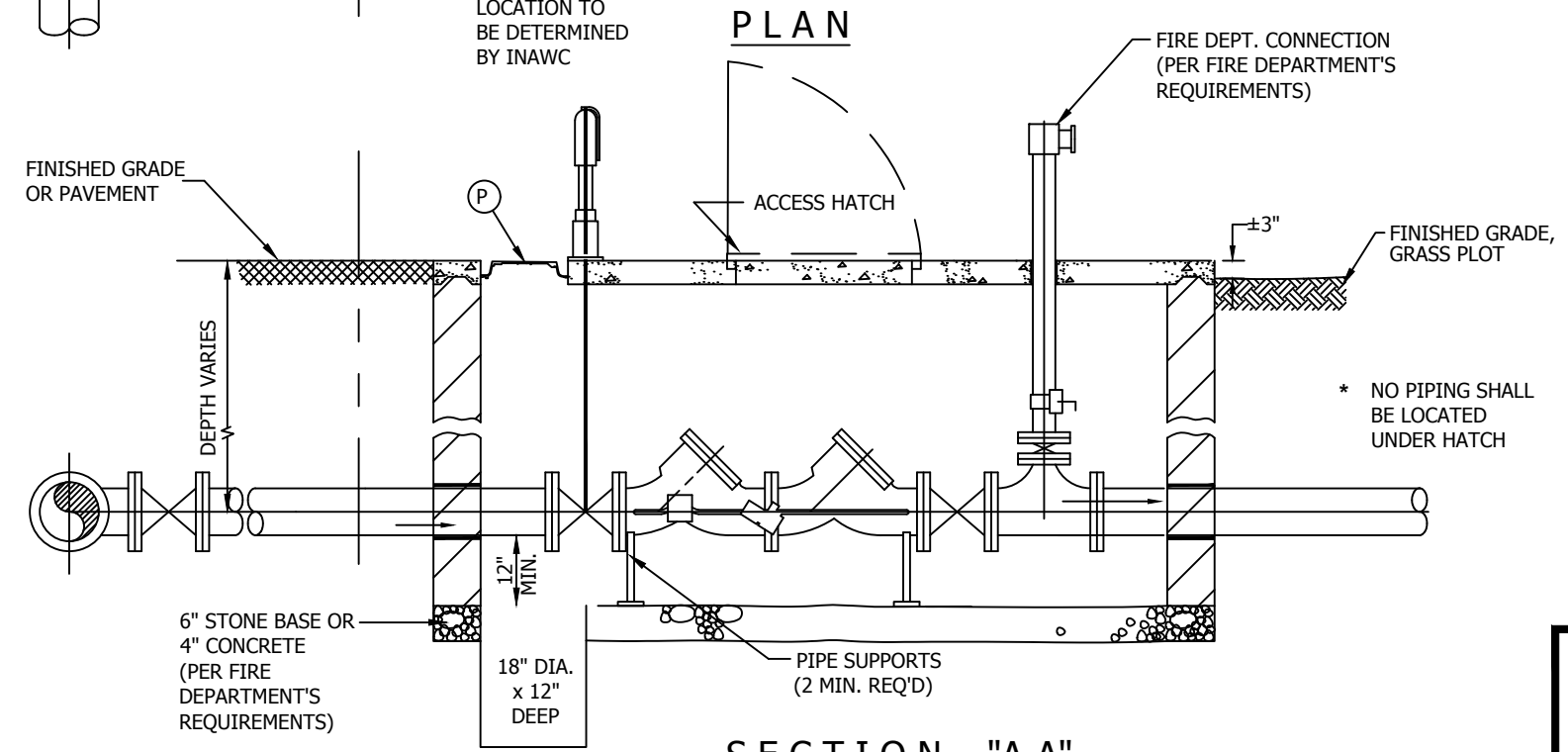
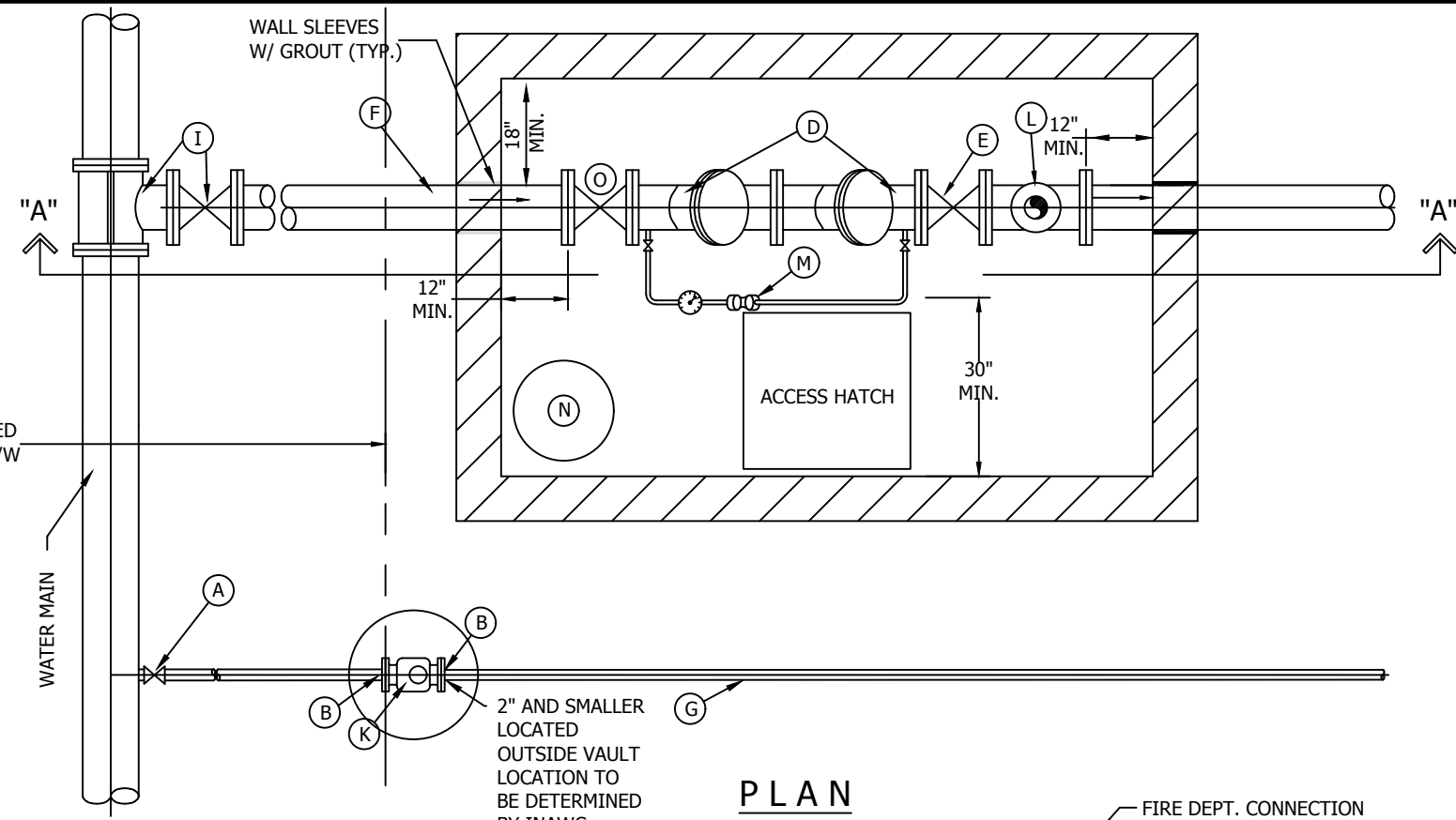


LEGEND

- | | | | |
|--|--|---|-------------------|
| (A) CORPORATION STOP | (F) FIRE LINE | (K) DOMESTIC SERVICE METER | (P) SUMP PUMP LID |
| (B) BALL VALVE W/ FLANGED END (SEE NOTE 8) | (G) DOMESTIC SERVICE | (L) FLANGED TEE | |
| (C) RJDI TEE | (H) NOT USED | (M) DETECTOR METER (SEE NOTE 8) | |
| (D) DOUBLE CHECK DETECTOR ASSEMBLY | (I) TAPPING SLEEVE W/ TAPPING VALVE & BOX (COORDINATE W/ LOCAL UTILITY SUPERINTENDENT/MANAGER) | (N) SUMP PIT | |
| (E) FLANGED OS & Y VALVE | (J) RJDI GATE VALVE | (O) FLANGED OS&Y VALVE WITH PIT TYPE POST INDICATOR | |

SECTION "A-A"

SCALE:	NO SCALE	LONG SIDE VAULT DETAIL	
REVISIONS		STANDARD FOR FIRE SERVICE & METER PIT FOR 2" AND SMALLER METER CONFIGURATION	
		DRAWN BY: R.K.B.	DATE: 2/2017
		CHECKED: A.C.	APPROVED:
		AUTOCAD FILE: IS-M-Y-single 2 & smaller-short long side.DWG	APPROVED:
			1 of 1



LEGEND

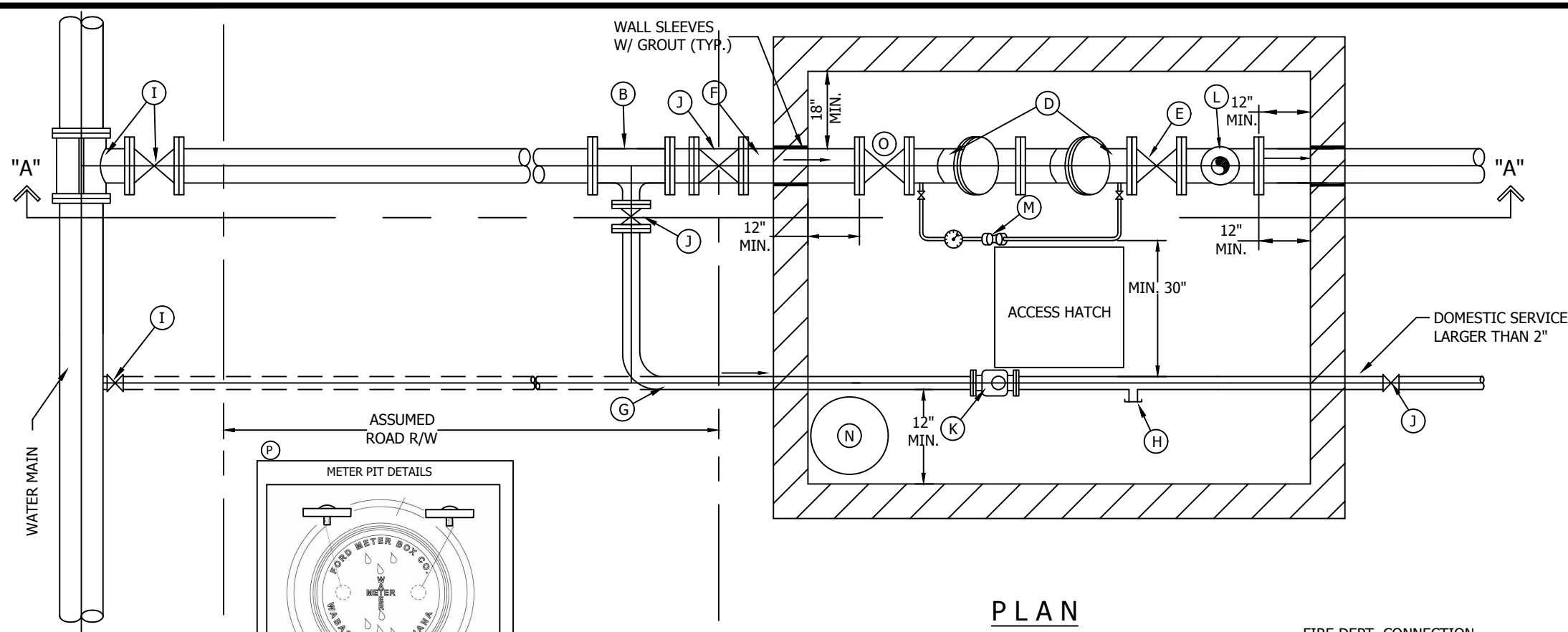
SECTION "A-A"

- (A) CORPORATION STOP
- (B) BALL VALVE W/ FLANGED END (SEE NOTE 8)
- (C) NOT USED
- (D) DOUBLE CHECK DETECTOR ASSEMBLY
- (E) FLANGED OS & Y VALVE
- (F) FIRE LINE
- (G) DOMESTIC SERVICE
- (H) NOT USED
- (I) TAPPING SLEEVE W/ TAPPING VALVE & BOX (COORDINATE W/ LOCAL UTILITY SUPERINTENDENT/MANAGER)
- (J) NOT USED
- (K) DOMESTIC SERVICE METER
- (L) FLANGED TEE
- (M) DETECTOR METER (SEE NOTE 8)
- (N) SUMP PIT
- (O) FLANGED OS&Y VALVE WITH PIT TYPE POST INDICATOR
- (P) SUMP PUMP LID

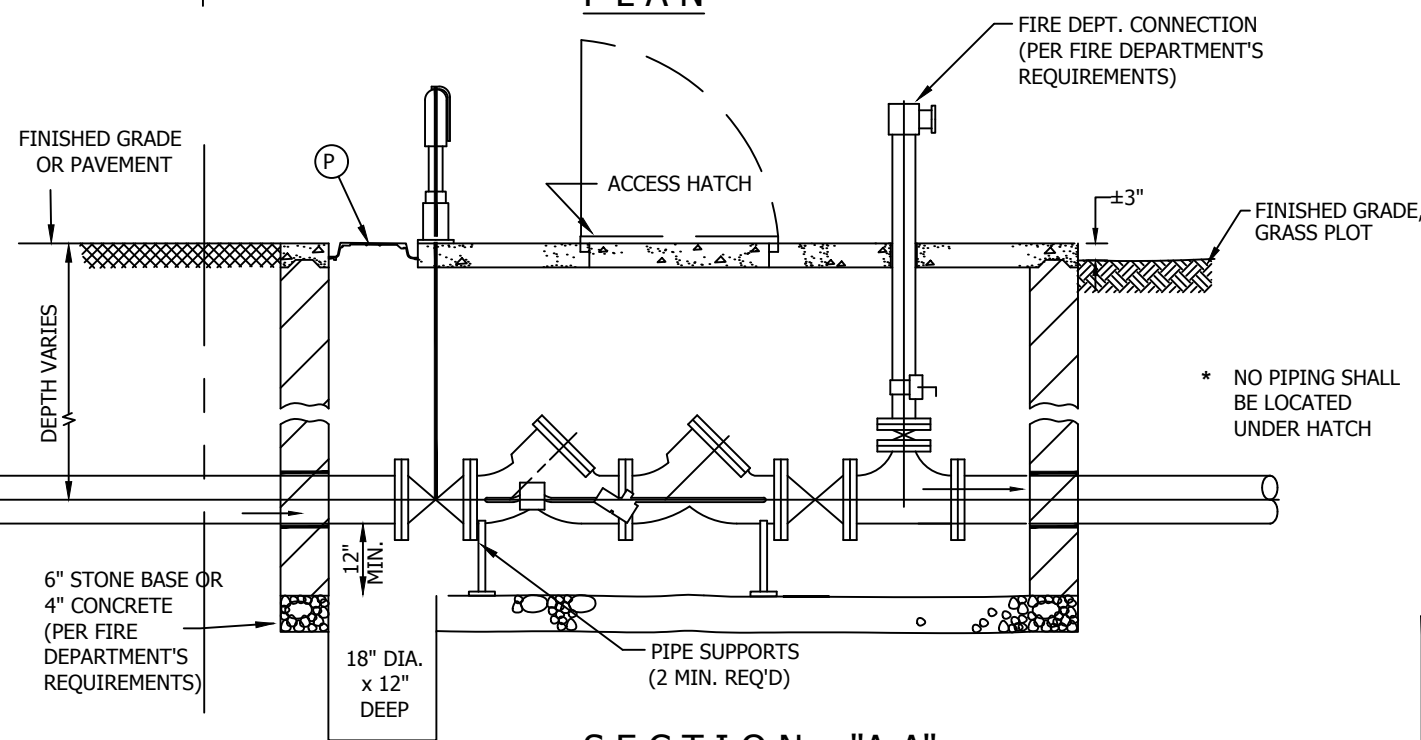
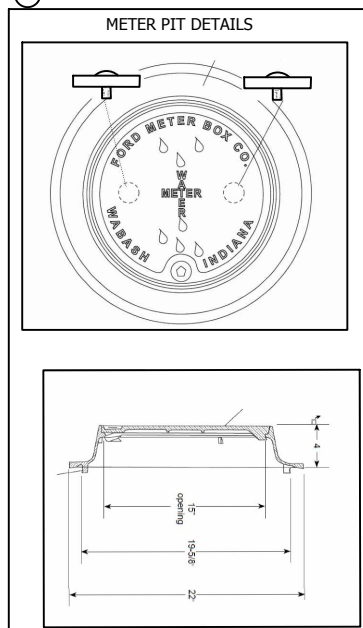
NOTES:

1. CUSTOMER SHALL FURNISH & INSTALL VAULT, INCLUDING ALL APPURTENCES EXCEPT AS NOTED BELOW.
2. VAULT CONSTRUCTION MATERIALS SHALL BE 8"x8"x16" CMU, OR PRECAST, OR CAST-IN-PLACE CONCRETE AT CUSTOMER'S SELECTION.
3. INSIDE DIMENSIONS PER DRAWING NOTES. VAULT TO BE SET LENGTHWISE WITH SERVICE.
4. TOP OF VAULT TO BE CONCRETE, AT LEAST 4" THICK WITH REINFORCING SUITABLE FOR ANTICIPATED LOADING. WHEN VAULT IS CONSTRUCTED IN PAVED AREAS, PAVEMENT IS TO BE LEVEL WITH TOP OF VAULT, AND THE TOP REINFORCED AS REQUIRED TO SUPPORT TRAFFIC LOADS (i.e. H-20 WHEEL LOADS). WHEN VAULT IS CONSTRUCTED IN GRASS PLOT, TOP OF VAULT SHALL BE 3" ABOVE FINISHED GRADE.
5. BOTTOM OF VAULT TO BE EITHER A MINIMUM OF 6" OF CRUSHED STONE OR 4" CONCRETE PER FIRE DEPARTMENT'S REQUIREMENT. MINIMUM CLEARANCE OF 12" BELOW BOTTOM OF FIRE SERVICE AND DOMESTIC SERVICE LINES IS REQUIRED.
6. DOUBLE CHECK DETECTOR ASSEMBLY SHALL BE A MODEL APPROVED BY THE INDIANA DEPARTMENT OF ENVIRONMENTAL MANAGEMENT, WITH FLANGED OS&Y GATE VALVE ON INLET & OUTLET SIDES. DETECTOR METER IS FURNISHED BY UTILITY AND INSTALLED BY CUSTOMER. STAINLESS STEEL BOLTS ARE REQUIRED.
7. ACCESS HATCH IN TOP OF VAULT SHALL BE 30"x30" ALUMINUM BILCO J-2AL, BILCO PCM-2, HALLIDAY W153030 OR EQUAL. ACCESS HATCH SHALL HAVE SAME OR GREATER LOADING CAPACITY AS VAULT LID. PIPE HATCH FRAME DRAIN TO VAULT FLOOR OR SUMP, AS APPLICABLE. IF THE LOCAL FIRE DEPARTMENT REQUIRES A SUMP PUMP IN THE VAULT, ELECTRICAL DISCONNECT IS REQUIRED ON TOP OF VAULT, INSTALLED ABOVE GRADE, PER LOCAL ELECTRICAL CODE.
8. A SEPARATE METER PIT/VAULT WILL BE USED FOR DOMESTIC METERS. DISTRICT TO PROVIDE PIT/VAULT DETAILS.
 - a. CUSTOMER SHALL FURNISH BALL VALVES ON BOTH SIDES OF THE DOMESTIC METER SETTING.
 - b. A 2" TEST PLUG SHALL BE INSTALLED AT LEAST 2 PIPE DIAMETERS DOWNSTREAM OF 2" OR LARGER METERS.
 - c. DETECTOR METER TO BE LOCATED A MAXIMUM 18" FROM HINGE SIDE OF HATCH.
9. AS DIRECTED BY LOCAL OPERATIONS, ADDITIONAL PIPE SUPPORTS MAY BE REQUIRED.
10. THE LID AND RING THAT WILL BE REQUIRED IS FORD A53-TT OR FORD A53-T. THE A53-TT WILL BE USED FOR ALL VAULTS WITH THE DOMESTIC METER INSIDE. THE A53-T WITH BE USED FOR ALL VAULTS WITH THE DCDA ONLY LOCATED INSIDE THE VAULT.

SCALE:	NO SCALE	SHORT SIDE VAULT DETAIL	
REVISIONS		STANDARD FOR FIRE SERVICE & METER PIT FOR 2" AND SMALLER METER CONFIGURATION	
		DRAWN BY: R.K.B.	DATE: 2/2017
		CHECKED: A.C.	
		AUTOCAD FILE: FS-M-Y-single 2 & smaller-short long side.DWG	APPROVED:
		1 of 1	



PLAN



SECTION "A-A"

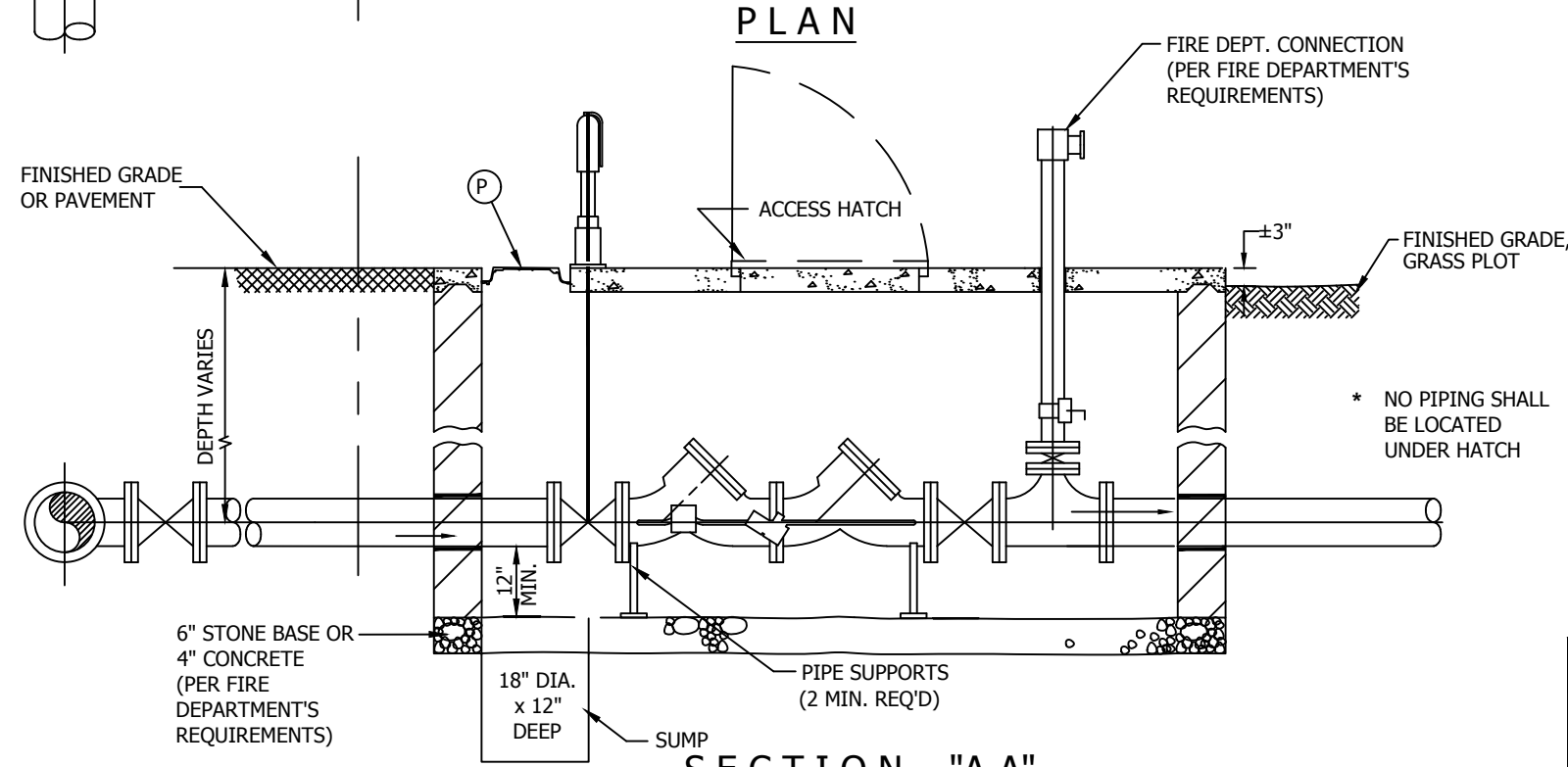
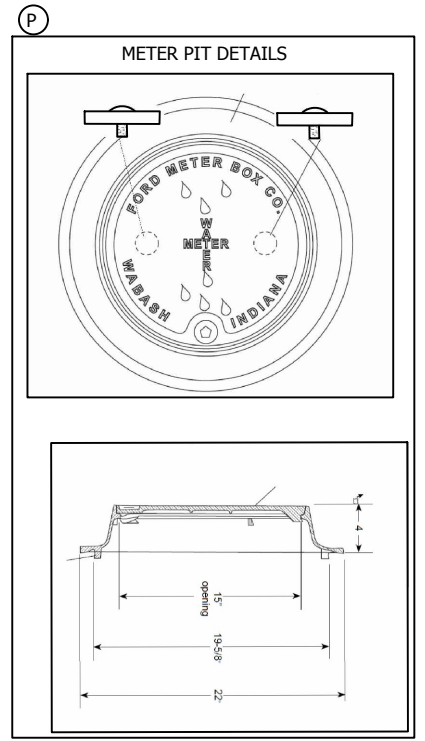
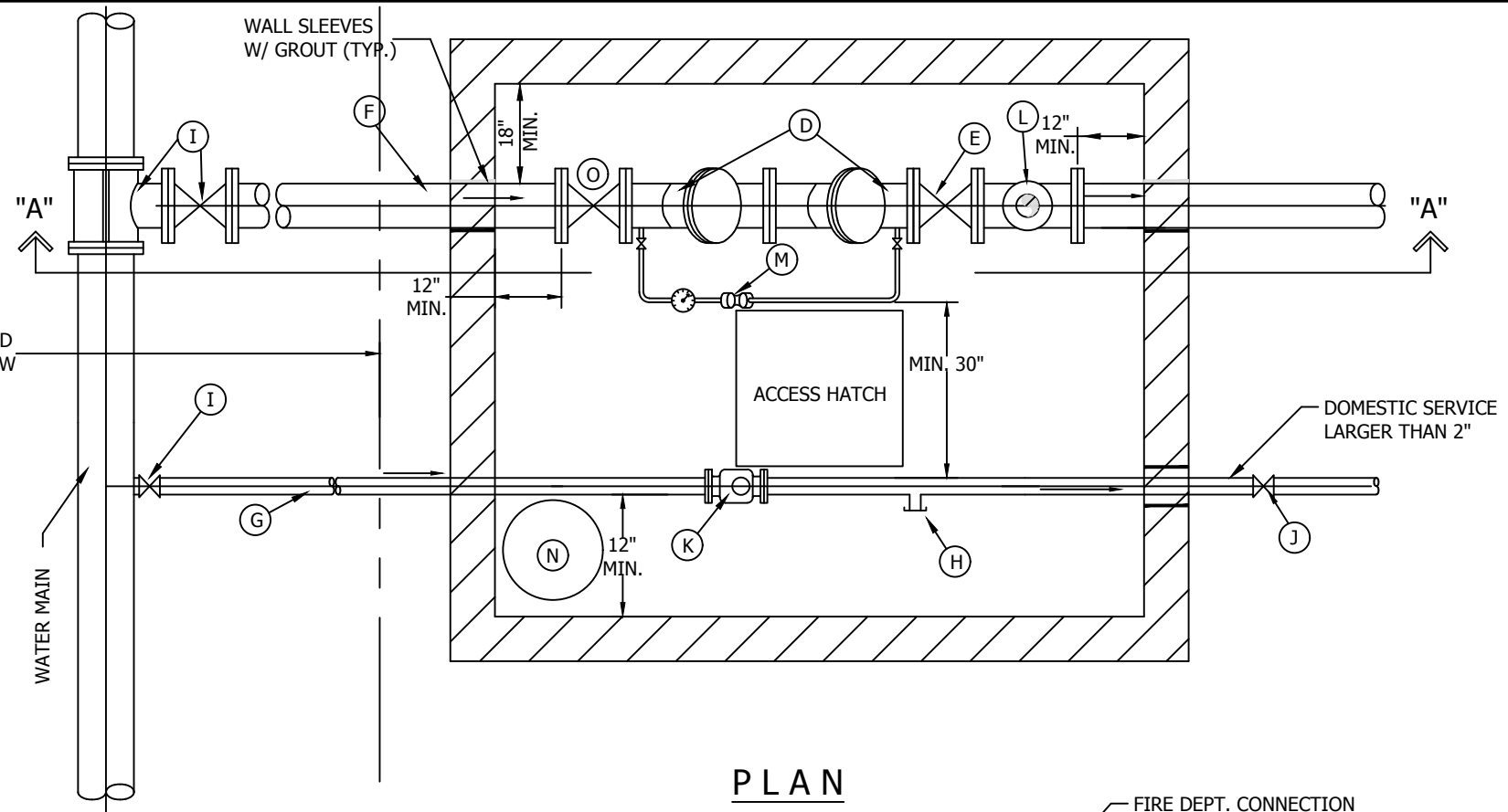
LEGEND

- | | | | |
|------------------------------------|--|---|-------------------|
| (A) NOT USED | (F) FIRE LINE | (K) DOMESTIC SERVICE METER (SEE NOTE 8) | (P) SUMP PUMP LID |
| (B) RJDI TEE | (G) DOMESTIC SERVICE (SEE NOTE 8) | (L) FLANGED TEE | |
| (C) NOT USED | (H) 2" TEST PLUG (SEE NOTE 8) | (M) DETECTOR METER (SEE NOTE 8) | |
| (D) DOUBLE CHECK DETECTOR ASSEMBLY | (I) TAPPING SLEEVE W/ TAPPING VALVE & BOX (COORDINATE W/ LOCAL UTILITY SUPERINTENDENT/MANAGER) | (N) SUMP PIT | |
| (E) FLANGED OS & Y VALVE | (J) RJDI GATE VALVE | (O) FLANGED OS&Y VALVE WITH PIT TYPE POST INDICATOR | |

NOTES:

- CUSTOMER SHALL FURNISH & INSTALL VAULT, INCLUDING ALL APPERTENCES EXCEPT AS NOTED BELOW.
- VAULT CONSTRUCTION MATERIALS SHALL BE 8"x8"x16" CMU, OR PRECAST, OR CAST-IN-PLACE CONCRETE AT CUSTOMER'S SELECTION.
- INSIDE DIMENSIONS PER DRAWING NOTES. VAULT TO BE SET LENGTHWISE WITH SERVICE.
- TOP OF VAULT TO BE CONCRETE, AT LEAST 4" THICK WITH REINFORCING SUITABLE FOR ANTICIPATED LOADING. WHEN VAULT IS CONSTRUCTED IN PAVED AREAS, PAVEMENT IS TO BE LEVEL WITH TOP OF VAULT, AND THE TOP REINFORCED AS REQUIRED TO SUPPORT TRAFFIC LOADS (i.e. H-20 WHEEL LOADS). WHEN VAULT IS CONSTRUCTED IN GRASS PLOT, TOP OF VAULT SHALL BE 3" ABOVE FINISHED GRADE.
- BOTTOM OF VAULT TO BE EITHER A MINIMUM OF 6" OF CRUSHED STONE OR 4" CONCRETE PER FIRE DEPARTMENT'S REQUIREMENT. MINIMUM CLEARANCE OF 12" BELOW BOTTOM OF FIRE SERVICE AND DOMESTIC SERVICE LINES IS REQUIRED.
- DOUBLE CHECK DETECTOR ASSEMBLY SHALL BE A MODEL APPROVED BY THE INDIANA DEPARTMENT OF ENVIRONMENTAL MANAGEMENT, WITH FLANGED OS&Y GATE VALVE ON INLET & OUTLET SIDES. DETECTOR METER IS FURNISHED BY UTILITY AND INSTALLED BY CUSTOMER. STAINLESS STEEL BOLTS ARE REQUIRED.
- ACCESS HATCH IN TOP OF VAULT SHALL BE 30"x30" ALUMINUM BILCO J-2AL, BILCO PCM-2, HALLIDAY W1S3030 OR EQUAL. ACCESS HATCH SHALL HAVE SAME OR GREATER LOADING CAPACITY AS VAULT LID. PIPE HATCH FRAME DRAIN TO VAULT FLOOR OR SUMP, AS APPLICABLE. IF THE LOCAL FIRE DEPARTMENT REQUIRES A SUMP PUMP IN THE VAULT, ELECTRICAL DISCONNECT IS REQUIRED ON TOP OF VAULT, INSTALLED ABOVE GRADE, PER LOCAL ELECTRICAL CODE.
- A COMBINATION VAULT CAN BE USED ONLY IF METER IS LARGER THAN 2".
 - METERS TO BE LOCATED A MAXIMUM 18" FROM HINGE SIDE OF HATCH.
 - A 2" TEST PLUG SHALL BE INSTALLED AT LEAST 2 PIPE DIAMETERS DOWNSTREAM OF 3" OR LARGER METERS.
- AS DIRECTED BY LOCAL OPERATIONS, ADDITIONAL PIPE SUPPORTS MAY BE REQUIRED.
- THE LID AND RING THAT WILL BE REQUIRED IS FORD A53-TT OR FORD A53-T. THE A53-TT WILL BE USED FOR ALL VAULTS WITH THE DOMESTIC METER INSIDE. THE A53-T WITH BE USED FOR ALL VAULTS WITH THE DCDA ONLY LOCATED INSIDE THE VAULT.

SCALE: NO SCALE		LONG SIDE VAULT DETAIL	
REVISIONS		STANDARD FOR COMBINED FIRE SERVICE & METER VAULT FOR 3" AND LARGER SINGLE METER CONFIGURATION	
DRAWN BY: R.K.B.	DATE: 2/2017	CHECKED: A.C.	1 of 1
AUTOCAD FILE: FS-M-V-single larger than 2-short long side.DWG		APPROVED:	



NOTES:

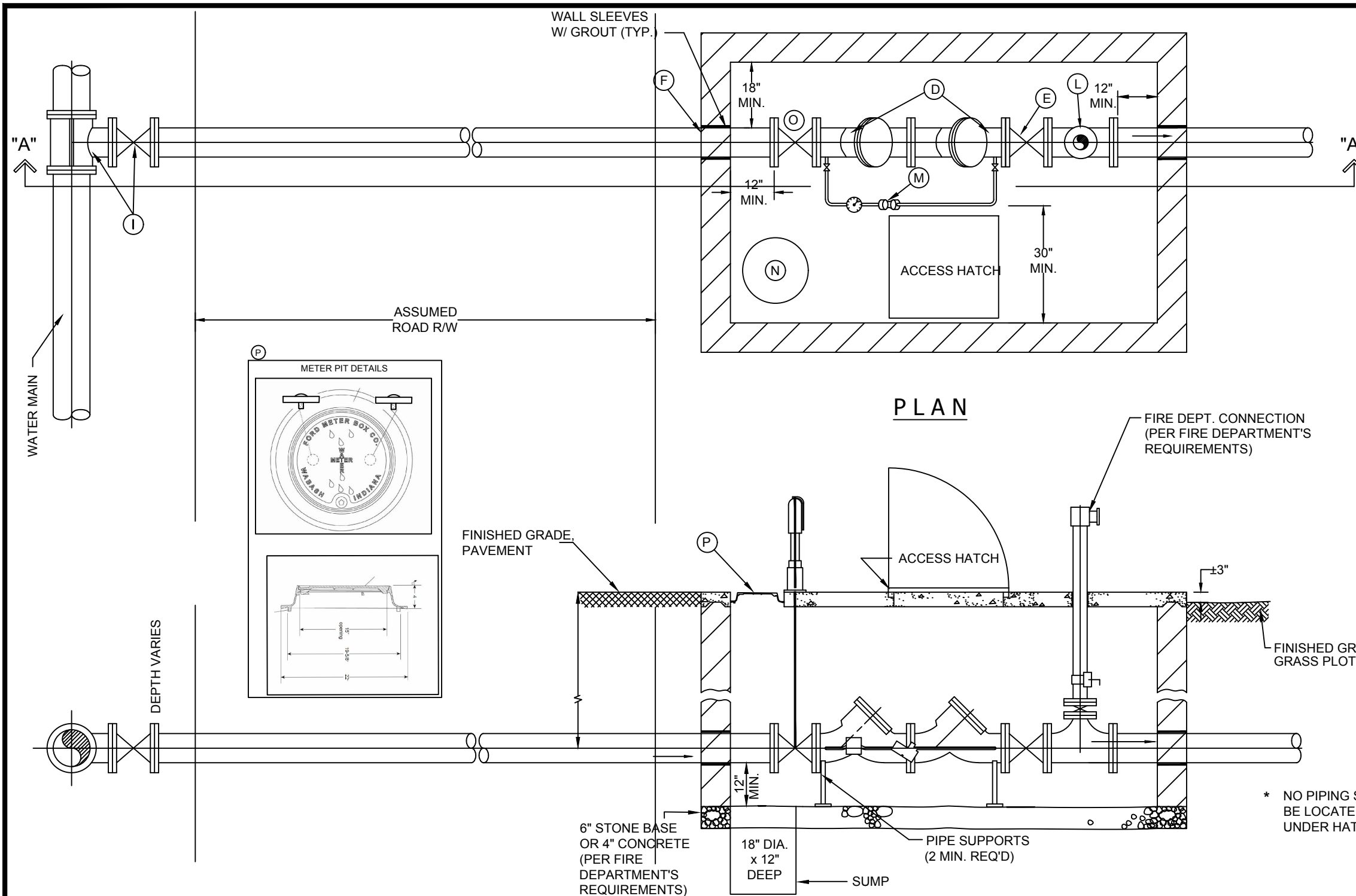
1. CUSTOMER SHALL FURNISH & INSTALL VAULT, INCLUDING ALL APPERTENCES EXCEPT AS NOTED BELOW.
2. VAULT CONSTRUCTION MATERIALS SHALL BE 8"x8"x16" CMU, OR PRECAST, OR CAST-IN-PLACE CONCRETE AT CUSTOMER'S SELECTION.
3. INSIDE DIMENSIONS PER DRAWING NOTES. VAULT TO BE SET LENGTHWISE WITH SERVICE.
4. TOP OF VAULT TO BE CONCRETE, AT LEAST 4" THICK WITH REINFORCING SUITABLE FOR ANTICIPATED LOADING. WHEN VAULT IS CONSTRUCTED IN PAVED AREAS, PAVEMENT IS TO BE LEVEL WITH TOP OF VAULT, AND THE TOP REINFORCED AS REQUIRED TO SUPPORT TRAFFIC LOADS (i.e. H-20 WHEEL LOADS). WHEN VAULT IS CONSTRUCTED IN GRASS PLOT, TOP OF VAULT SHALL BE 3" ABOVE FINISHED GRADE.
5. BOTTOM OF VAULT TO BE EITHER A MINIMUM OF 6" OF CRUSHED STONE OR 4" CONCRETE PER FIRE DEPARTMENT'S REQUIREMENT. MINIMUM CLEARANCE OF 12" BELOW BOTTOM OF FIRE SERVICE AND DOMESTIC SERVICE LINES IS REQUIRED.
6. DOUBLE CHECK DETECTOR ASSEMBLY SHALL BE A MODEL APPROVED BY THE INDIANA DEPARTMENT OF ENVIRONMENTAL MANAGEMENT, WITH FLANGED OS&Y GATE VALVE ON INLET & OUTLET SIDES. DETECTOR METER IS FURNISHED BY UTILITY AND INSTALLED BY CUSTOMER. STAINLESS STEEL BOLTS ARE REQUIRED.
7. ACCESS HATCH IN TOP OF VAULT SHALL BE 30"x30" ALUMINUM BILCO J-2AL, BILCO PCM-2, HALLIDAY W1S3030 OR EQUAL. ACCESS HATCH SHALL HAVE SAME OR GREATER LOADING CAPACITY AS VAULT LID. PIPE HATCH FRAME DRAIN TO VAULT FLOOR OR SUMP, AS APPLICABLE. IF THE LOCAL FIRE DEPARTMENT REQUIRES A SUMP PUMP IN THE VAULT, ELECTRICAL DISCONNECT IS REQUIRED ON TOP OF VAULT, INSTALLED ABOVE GRADE, PER LOCAL ELECTRICAL CODE.
8. A COMBINATION VAULT CAN BE USED ONLY IF METER IS LARGER THAN 2".
 - a. METERS TO BE LOCATED A MAXIMUM 18" FROM HINGE SIDE OF HATCH.
 - b. A 2" TEST PLUG SHALL BE INSTALLED AT LEAST 2 PIPE DIAMETERS DOWNSTREAM OF 3" OR LARGER METERS.
9. AS DIRECTED BY LOCAL OPERATIONS, ADDITIONAL PIPE SUPPORTS MAY BE REQUIRED.
10. THE LID AND RING THAT WILL BE REQUIRED IS FORD A53-TT OR FORD A53-T. THE A53-TT WILL BE USED FOR ALL VAULTS WITH THE DOMESTIC METER INSIDE. THE A53-T WITH BE USED FOR ALL VAULTS WITH THE DCDA ONLY LOCATED INSIDE THE VAULT.

LEGEND

- | | | | |
|------------------------------------|--|---|-------------------|
| (A) NOT USED | (F) FIRE LINE | (K) DOMESTIC SERVICE METER (SEE NOTE 8) | (P) SUMP PUMP LID |
| (B) NOT USED | (G) DOMESTIC SERVICE (SEE NOTE 8) | (L) FLANGED TEE | |
| (C) NOT USED | (H) 2" TEST PLUG (SEE NOTE 8) | (M) DETECTOR METER (SEE NOTE 8) | |
| (D) DOUBLE CHECK DETECTOR ASSEMBLY | (I) TAPPING SLEEVE W/ TAPPING VALVE & BOX (COORDINATE W/ LOCAL UTILITY SUPERINTENDENT/MANAGER) | (N) SUMP PIT | |
| (E) FLANGED OS & Y VALVE | (J) RJDI GATE VALVE | (O) FLANGED OS&Y VALVE WITH PIT TYPE POST INDICATOR | |



SCALE: NO SCALE		SHORT SIDE VAULT DETAIL	
REVISIONS			
		STANDARD FOR COMBINED FIRE SERVICE & METER VAULT FOR 3" AND LARGER SINGLE METER CONFIGURATION	
DRAWN BY: R.K.B.	DATE: 2/2017	CHECKED: A.C.	1 of 1
AUTOCAD FILE: FS-M-Y single larger than 2-short long side.DWG	APPROVED:		




NOTES:

1. CUSTOMER SHALL FURNISH & INSTALL VAULT, INCLUDING ALL APPERTENCES EXCEPT AS NOTED BELOW.
2. VAULT CONSTRUCTION MATERIALS SHALL BE 8"x8"x16" CMU, OR PRECAST, OR CAST-IN-PLACE CONCRETE AT CUSTOMER'S SELECTION.
3. INSIDE DIMENSIONS PER DRAWING NOTES. VAULT TO BE SET LENGTHWISE WITH SERVICE.
4. TOP OF VAULT TO BE CONCRETE, AT LEAST 4" THICK WITH REINFORCING SUITABLE FOR ANTICIPATED LOADING. WHEN VAULT IS CONSTRUCTED IN PAVED AREAS, PAVEMENT IS TO BE LEVEL WITH TOP OF VAULT, AND THE TOP REINFORCED AS REQUIRED TO SUPPORT TRAFFIC LOADS (i.e. H-20 WHEEL LOADS). WHEN VAULT IS CONSTRUCTED IN GRASS PLOT, TOP OF VAULT SHALL BE 3" ABOVE FINISHED GRADE.
5. BOTTOM OF VAULT TO BE EITHER A MINIMUM OF 6" OF CRUSHED STONE OR 4" CONCRETE PER FIRE DEPARTMENT'S REQUIREMENT. MINIMUM CLEARANCE OF 12" BELOW BOTTOM OF FIRE SERVICE AND DOMESTIC SERVICE LINES IS REQUIRED.
6. DOUBLE CHECK DETECTOR ASSEMBLY SHALL BE A MODEL APPROVED BY THE INDIANA DEPARTMENT OF ENVIRONMENTAL MANAGEMENT, WITH FLANGED OS&Y GATE VALVE ON INLET & OUTLET SIDES. DETECTOR METER IS FURNISHED BY UTILITY AND INSTALLED BY CUSTOMER. STAINLESS STEEL BOLTS ARE REQUIRED.
7. ACCESS HATCH IN TOP OF VAULT SHALL BE 30"x30" ALUMINUM BILCO J-2AL, BILCO PCM-2, HALLIDAY W1S3030 OR EQUAL. ACCESS HATCH SHALL HAVE SAME OR GREATER LOADING CAPACITY AS VAULT LID. PIPE HATCH FRAME DRAIN TO VAULT FLOOR OR SUMP, AS APPLICABLE. IF THE LOCAL FIRE DEPARTMENT REQUIRES A SUMP PUMP IN THE VAULT, ELECTRICAL DISCONNECT IS REQUIRED ON TOP OF VAULT, INSTALLED ABOVE GRADE, PER LOCAL ELECTRICAL CODE.
8. A SEPARATE METER PIT/VAULT WILL BE USED FOR DOMESTIC METERS. DISTRICT TO PROVIDE PIT/VAULT DETAILS.
 - a. CUSTOMER SHALL FURNISH BALL VALVES ON BOTH SIDES OF THE DOMESTIC METER SETTING.
 - b. A 2" TEST PLUG SHALL BE INSTALLED AT LEAST 2 PIPE DIAMETERS DOWNSTREAM OF 2" OR LARGER METERS.
 - c. DETECTOR METER TO BE LOCATED A MAXIMUM 18" FROM HINGE SIDE OF HATCH.
9. AS DIRECTED BY LOCAL OPERATIONS, ADDITIONAL PIPE SUPPORTS MAY BE REQUIRED.
10. THE LID AND RING THAT WILL BE REQUIRED IS FORD A53-TT OR FORD A53-T. THE A53-TT WILL BE USED FOR ALL VAULTS WITH THE DOMESTIC METER INSIDE. THE A53-T WITH BE USED FOR ALL VAULTS WITH THE DCDA ONLY LOCATED INSIDE THE VAULT.

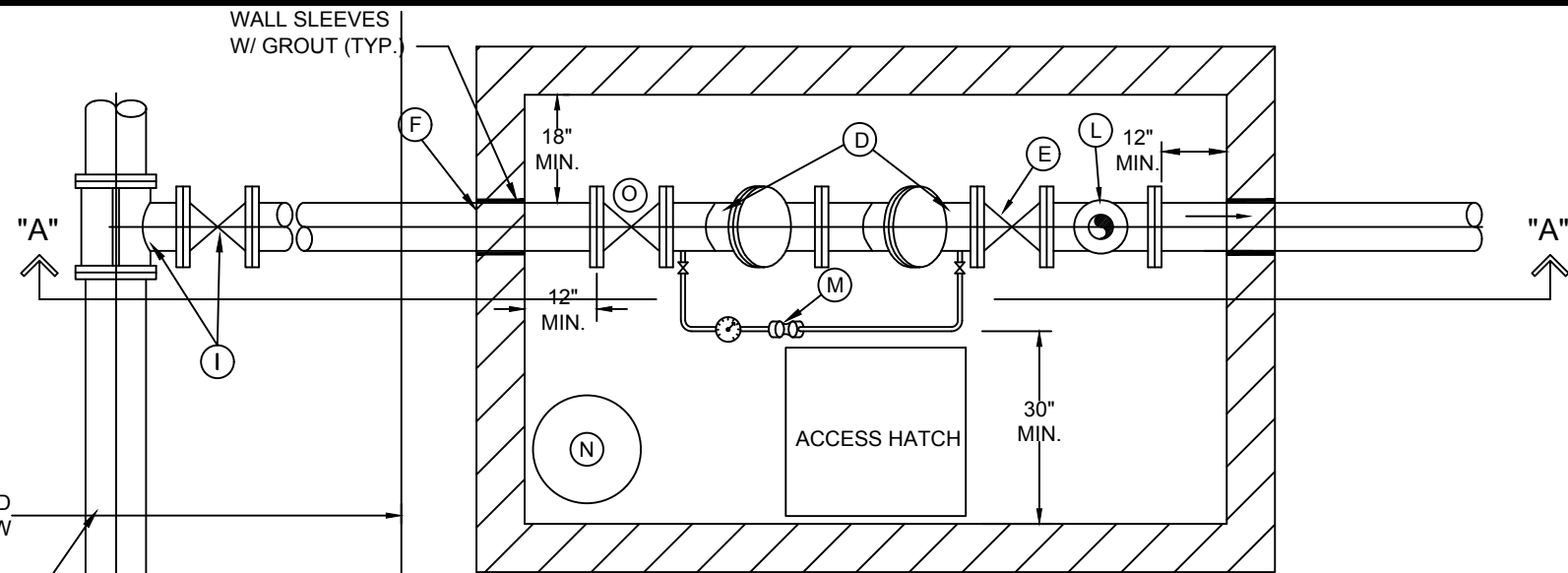
LEGEND

- | | |
|------------------------------------|--|
| (A) NOT USED | (H) NOT USED |
| (B) NOT USED | (I) TAPPING SLEEVE W/ TAPPING VALVE & BOX (COORDINATE WITH LOCAL UTILITY SUPERINTENDENT/MANAGER) |
| (C) NOT USED | (J) NOT USED |
| (D) DOUBLE CHECK DETECTOR ASSEMBLY | (K) NOT USED |
| (E) FLANGED OS & Y VALVE | (L) FLANGED TEE |
| (F) FIRE LINE | (M) DETECTOR METER |
| (G) NOT USED | (N) SUMP PIT |
| | (O) FLANGED OS&Y VALVE WITH PIT TYPE POST INDICATOR |
| | (P) SUMP PUMP LID |

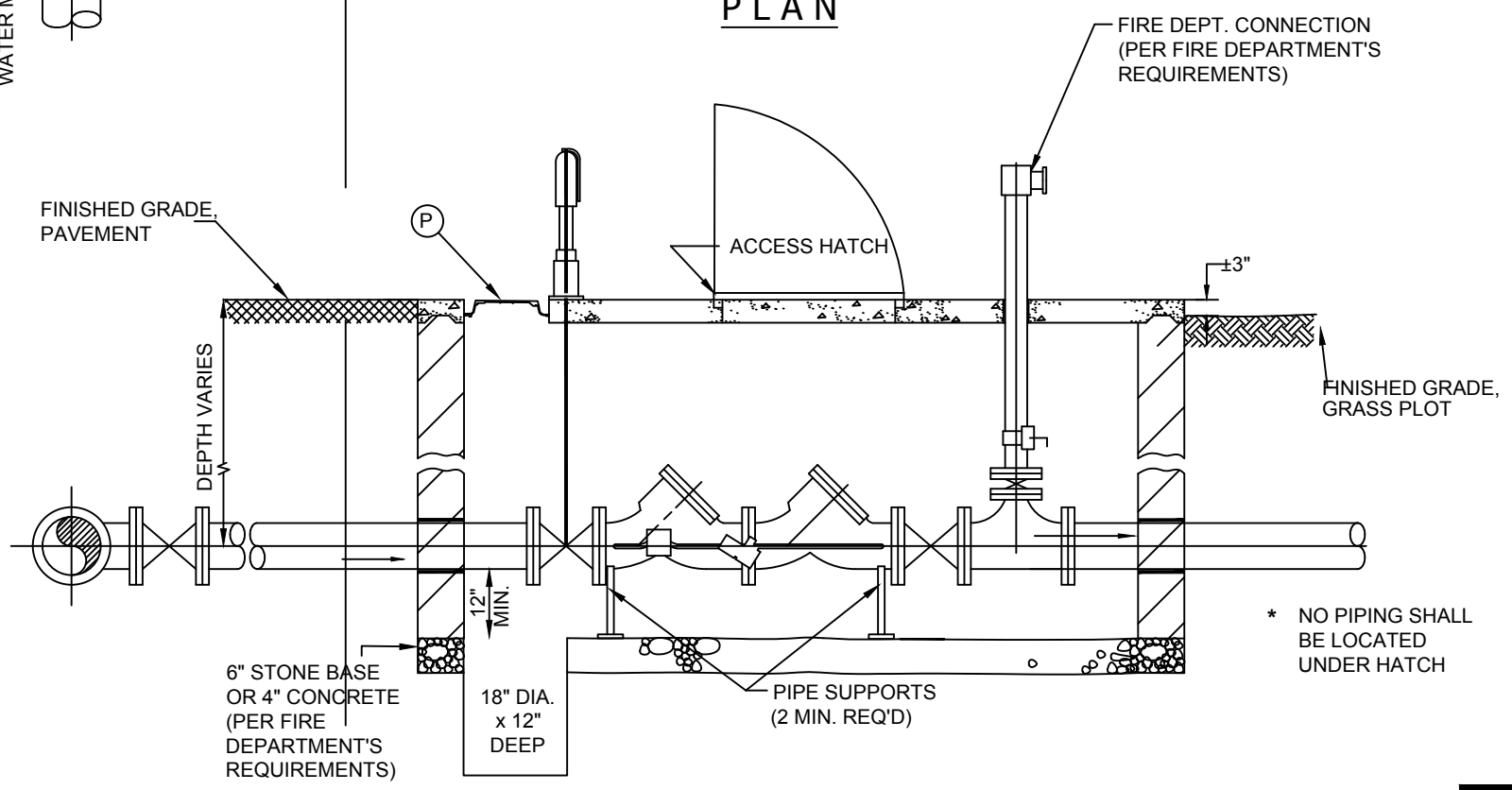


**INDIANA
AMERICAN WATER**

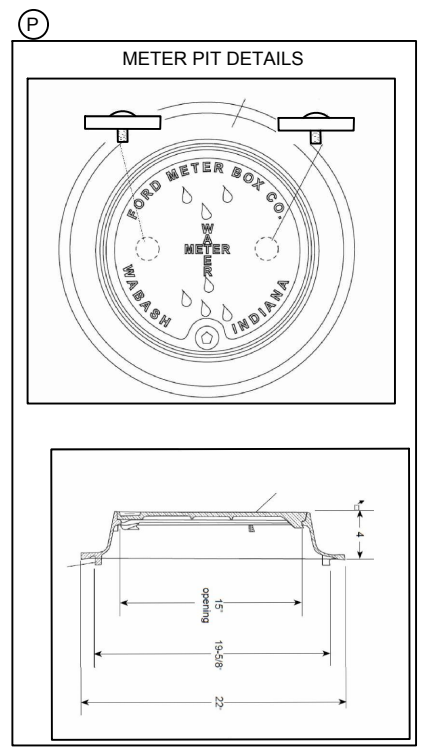
SCALE: NO SCALE		LONG SIDE VAULT DETAIL	
REVISIONS		STANDARD FIRE SERVICE VAULT	
DRAWN BY: R.K.B.	DATE: 2/2017	CHECKED: AC	1 of 1
AUTOCAD FILE: FS-VAULT-LONG SHORT SIDE.DWG	APPROVED:		



PLAN



SECTION "A-A"



LEGEND

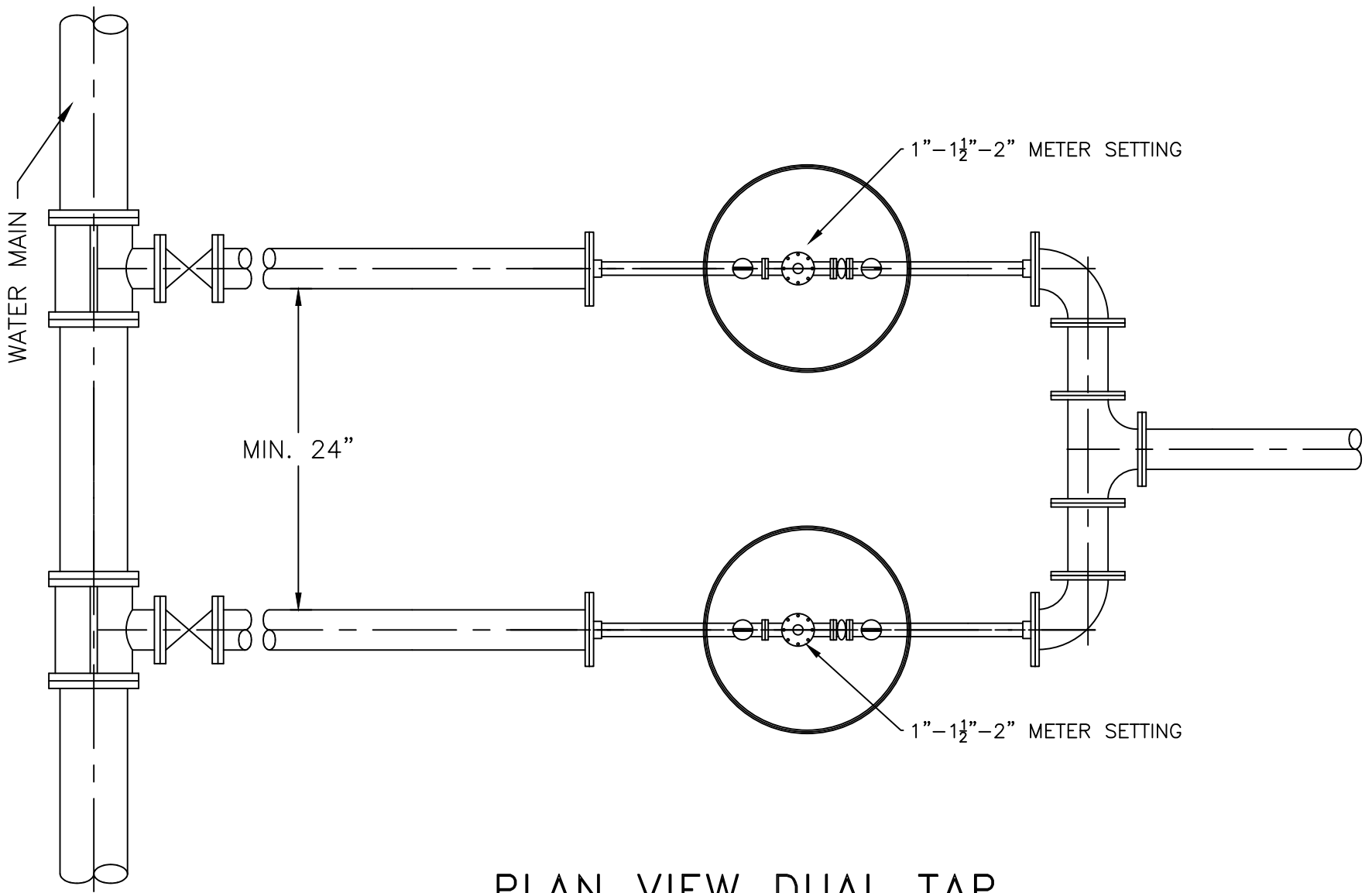
- | | |
|------------------------------------|--|
| (A) NOT USED | (H) NOT USED |
| (B) NOT USED | (I) TAPPING SLEEVE W/ TAPPING VALVE & BOX (COORDINATE WITH LOCAL UTILITY SUPERINTENDENT/MANAGER) |
| (C) NOT USED | (J) NOT USED |
| (D) DOUBLE CHECK DETECTOR ASSEMBLY | (K) NOT USED |
| (E) FLANGED OS & Y VALVE | (L) FLANGED TEE |
| (F) FIRE LINE | (M) DETECTOR METER (SEE NOTE 8) |
| (G) NOT USED | (N) SUMP PIT |
| | (O) FLANGED OS&Y VALVE WITH PIT TYPE POST INDICATOR |
| | (P) SUMP PUMP LID |

- NOTES:**
- CUSTOMER SHALL FURNISH & INSTALL VAULT, INCLUDING ALL APPURTENCES EXCEPT AS NOTED BELOW.
 - VAULT CONSTRUCTION MATERIALS SHALL BE 8"x8"x16" CMU, OR PRECAST, OR CAST-IN-PLACE CONCRETE AT CUSTOMER'S SELECTION.
 - INSIDE DIMENSIONS PER DRAWING NOTES. VAULT TO BE SET LENGTHWISE WITH SERVICE.
 - TOP OF VAULT TO BE CONCRETE, AT LEAST 4" THICK WITH REINFORCING SUITABLE FOR ANTICIPATED LOADING. WHEN VAULT IS CONSTRUCTED IN PAVED AREAS, PAVEMENT IS TO BE LEVEL WITH TOP OF VAULT, AND THE TOP REINFORCED AS REQUIRED TO SUPPORT TRAFFIC LOADS (i.e. H-20 WHEEL LOADS). WHEN VAULT IS CONSTRUCTED IN GRASS PLOT, TOP OF VAULT SHALL BE 3" ABOVE FINISHED GRADE.
 - BOTTOM OF VAULT TO BE EITHER A MINIMUM OF 6" OF CRUSHED STONE OR 4" CONCRETE PER FIRE DEPARTMENT'S REQUIREMENT. MINIMUM CLEARANCE OF 12" BELOW BOTTOM OF FIRE SERVICE AND DOMESTIC SERVICE LINES IS REQUIRED.
 - DOUBLE CHECK DETECTOR ASSEMBLY SHALL BE A MODEL APPROVED BY THE INDIANA DEPARTMENT OF ENVIRONMENTAL MANAGEMENT, WITH FLANGED OS&Y GATE VALVE ON INLET & OUTLET SIDES. DETECTOR METER IS FURNISHED BY UTILITY AND INSTALLED BY CUSTOMER. STAINLESS STEEL BOLTS ARE REQUIRED.
 - ACCESS HATCH IN TOP OF VAULT SHALL BE 30"x30" ALUMINUM BILCO J-2AL, BILCO PCM-2, HALLIDAY W1S3030 OR EQUAL. ACCESS HATCH SHALL HAVE SAME OR GREATER LOADING CAPACITY AS VAULT LID. PIPE HATCH FRAME DRAIN TO VAULT FLOOR OR SUMP, AS APPLICABLE. IF THE LOCAL FIRE DEPARTMENT REQUIRES A SUMP PUMP IN THE VAULT, ELECTRICAL DISCONNECT IS REQUIRED ON TOP OF VAULT, INSTALLED ABOVE GRADE, PER LOCAL ELECTRICAL CODE.
 - A SEPARATE METER PIT/VAULT WILL BE USED FOR DOMESTIC METERS. DISTRICT TO PROVIDE PIT/VAULT DETAILS.
 - CUSTOMER SHALL FURNISH BALL VALVES ON BOTH SIDES OF THE DOMESTIC METER SETTING.
 - A 2" TEST PLUG SHALL BE INSTALLED AT LEAST 2 PIPE DIAMETERS DOWNSTREAM OF 2" OR LARGER METERS.
 - DETECTOR METER TO BE LOCATED A MAXIMUM 18" FROM HINGE SIDE OF HATCH.
 - AS DIRECTED BY LOCAL OPERATIONS, ADDITIONAL PIPE SUPPORTS MAY BE REQUIRED.
 - THE LID AND RING THAT WILL BE REQUIRED IS FORD A53-TT OR FORD A53-T. THE A53-TT WILL BE USED FOR ALL VAULTS WITH THE DOMESTIC METER INSIDE. THE A53-T WITH BE USED FOR ALL VAULTS WITH THE DCDA ONLY LOCATED INSIDE THE VAULT.

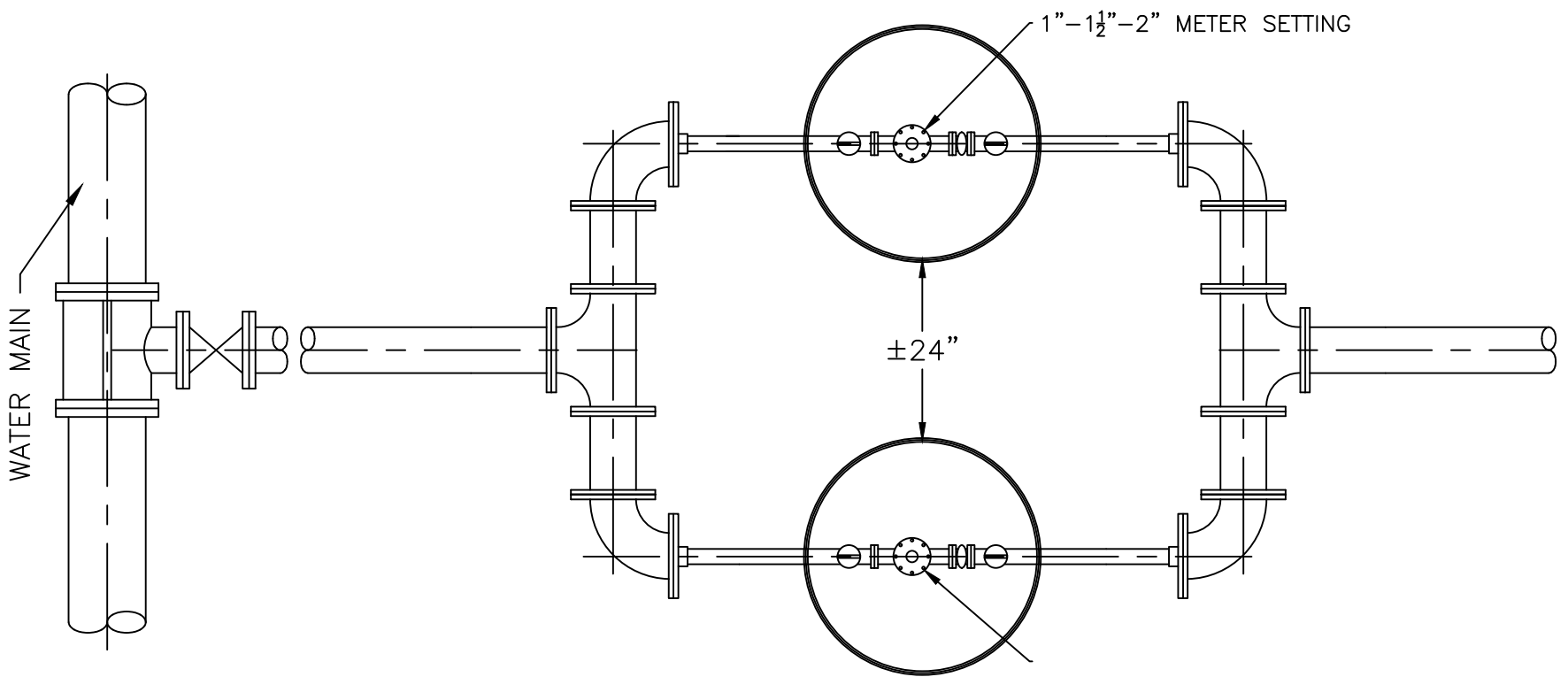
INDIANA AMERICAN WATER

SCALE:	NO SCALE	SHORT SIDE VAULT DETAIL	
REVISIONS		STANDARD FIRE SERVICE VAULT	
		DRAWN BY: R.K.B.	DATE: 2/2017
		CHECKED: AC	
		AUTOCAD FILE: FS-VAULT-LONG SHORT SIDE.DWG	APPROVED:

1 of 1



PLAN VIEW DUAL TAP




PLAN VIEW SINGLE TAP

NOTES:

METER PIT DETAIL PER DISTRICT.

SERVICE MAY REQUIRE APPROVED BACKFLOW PREVENTION DEVICE IN ACCORDANCE WITH 327 IAC 8-10.

	
SCALE: NOT TO SCALE	INDIANA
REVISIONS	TYPICAL DUAL 2" METER PITS DETAIL
DRAWN BY: R.K.B.	DATE: 10/2016
AUTOCAD FILE: Dual 2 Meter Pits.dwg	CHECKED: APPROVED:
	SHEET 1 of 1